

# PORTFOLIO


Jocelyne D Johnson

*Style*•Fixation  
interiors



## ABOUT

 @StyleFixationInteriors

 403 • 465 • 1234

 Jocelynee@StyleFixation.com

 www.StyleFixation.com

 878 Hammer Ave, Kelowna, BC

My name is Jocelyne Devonshire Johnson, and I'm the owner of Style Fixation Interiors.

Before studying Interior Design, I pursued an education in Textiles & Design followed by my MBA, which led to an earlier career in Branding and Communications. My previous career helped me develop a deep understanding of how to communicate a concept visually, and I can help you set the tone you want to create in your spaces.

**I believe in open and honest communication and total transparency; with over a decade of project management experience, you can trust your project with me.**

STYLE FIXATION INTERIORS BELIEVES IN CLASSIC DESIGN WITH A TWIST.


**BOLD (NEVER BORING), THE JUXTAPOSITION OF OLD AND NEW, AND ABOVE ALL, BEAUTIFUL AND UNIQUE SPACES THAT ARE COMPLETELY LIVABLE.**

*Style*•Fixation  
interiors



BEFORE & AFTERS

 @StyleFixationInteriors

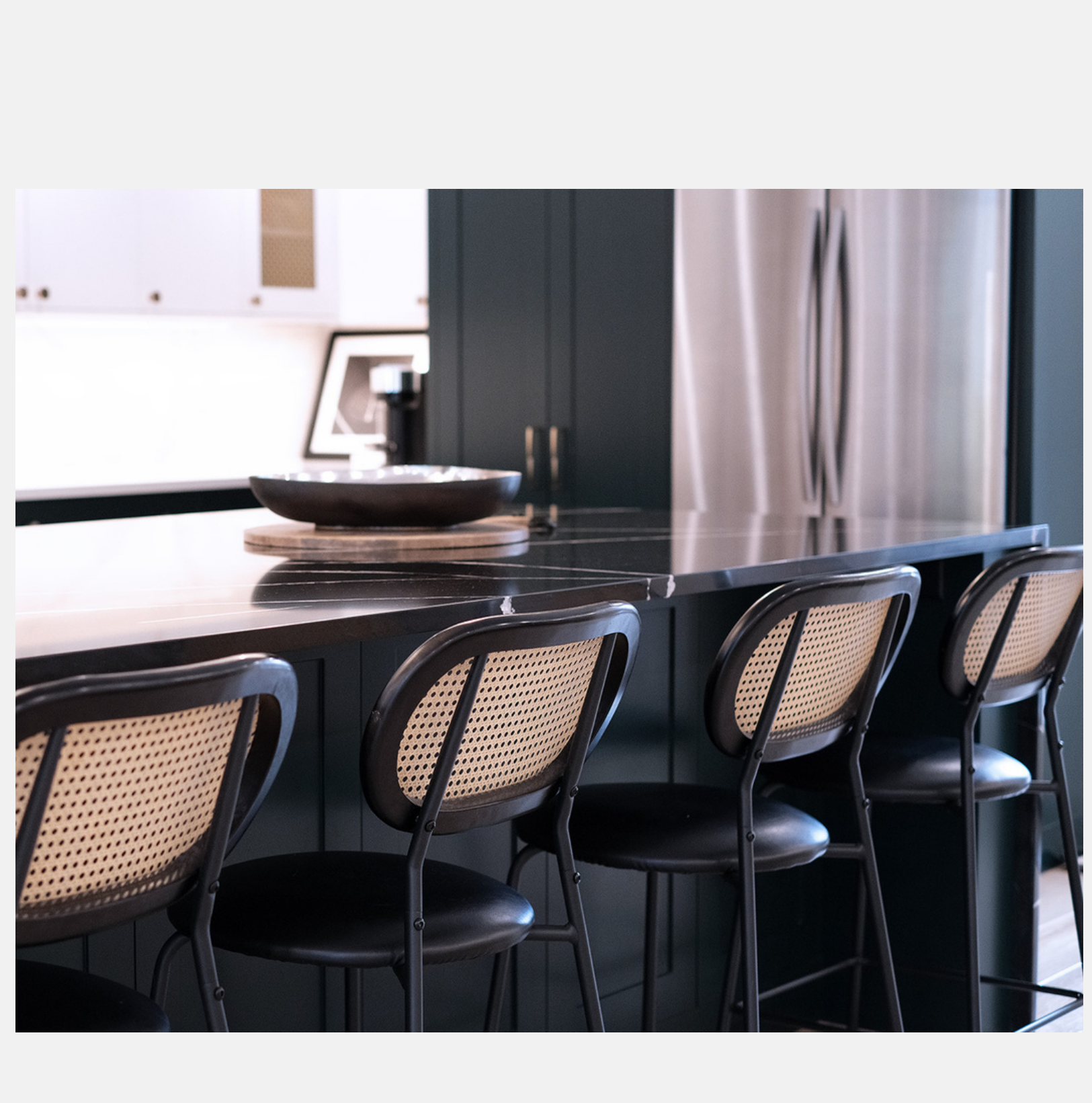
 403 • 465 • 1234

 Jocelyne@StyleFixation.com

 www.StyleFixation.com


 878 Hammer Ave, Kelowna, BC

*Style*•Fixation  
interiors




BEFORE & AFTERS

 @StyleFixationInteriors

 403 • 465 • 1234

 JocelyneeStyleFixation.com

 www.StyleFixation.com


 878 Hammer Ave, Kelowna, BC

*Style*•Fixation  
interiors




BEFORE & AFTERS

 @StyleFixationInteriors

 403 • 465 • 1234

 Jocelyne@StyleFixation.com

 www.StyleFixation.com


 878 Hammer Ave, Kelowna, BC

*Style*•Fixation  
interiors




BEFORE & AFTERS

 @StyleFixationInteriors

 403 • 465 • 1234

 Jocelyne@StyleFixation.com

 www.StyleFixation.com


 878 Hammer Ave, Kelowna, BC

*Style*•Fixation  
interiors




BEFORE & AFTERS

 @StyleFixationInteriors

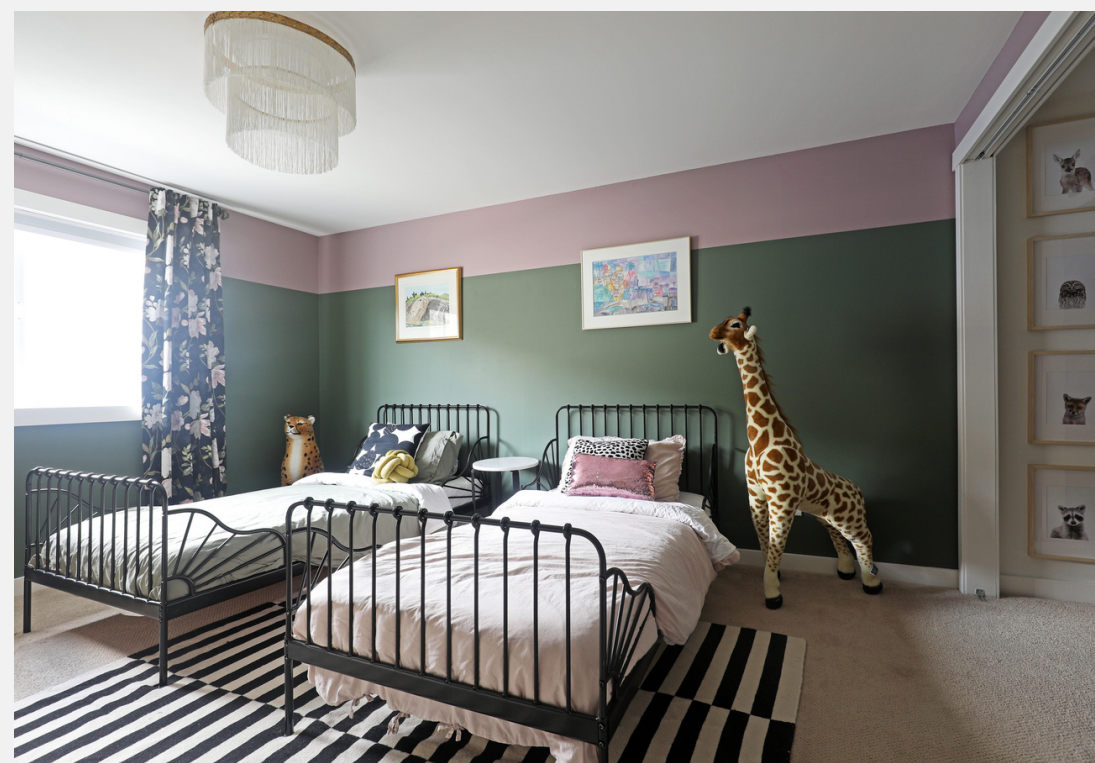
 403 • 465 • 1234

 Jocelynee@StyleFixation.com

 www.StyleFixation.com

 878 Hammer Ave, Kelowna, BC

*Style*•Fixation  
interiors



BEFORE & AFTERS

@StyleFixationInteriors

403 • 465 • 1234

Jocelyne@StyleFixation.com

www.StyleFixation.com

878 Hammer Ave, Kelowna, BC


Style • Fixation  
interiors






BEFORE & AFTERS

 @StyleFixationInteriors

 403 • 465 • 1234

 Jocelynee@StyleFixation.com

 www.StyleFixation.com


 878 Hammer Ave, Kelowna, BC

*Style*•Fixation  
interiors




RENDERINGS

 @StyleFixationInteriors

 403 • 465 • 1234

 Jocelynee@StyleFixation.com

 www.StyleFixation.com


 878 Hammer Ave, Kelowna, BC

*Style*•Fixation  
interiors




RENDERINGS

 @StyleFixationInteriors

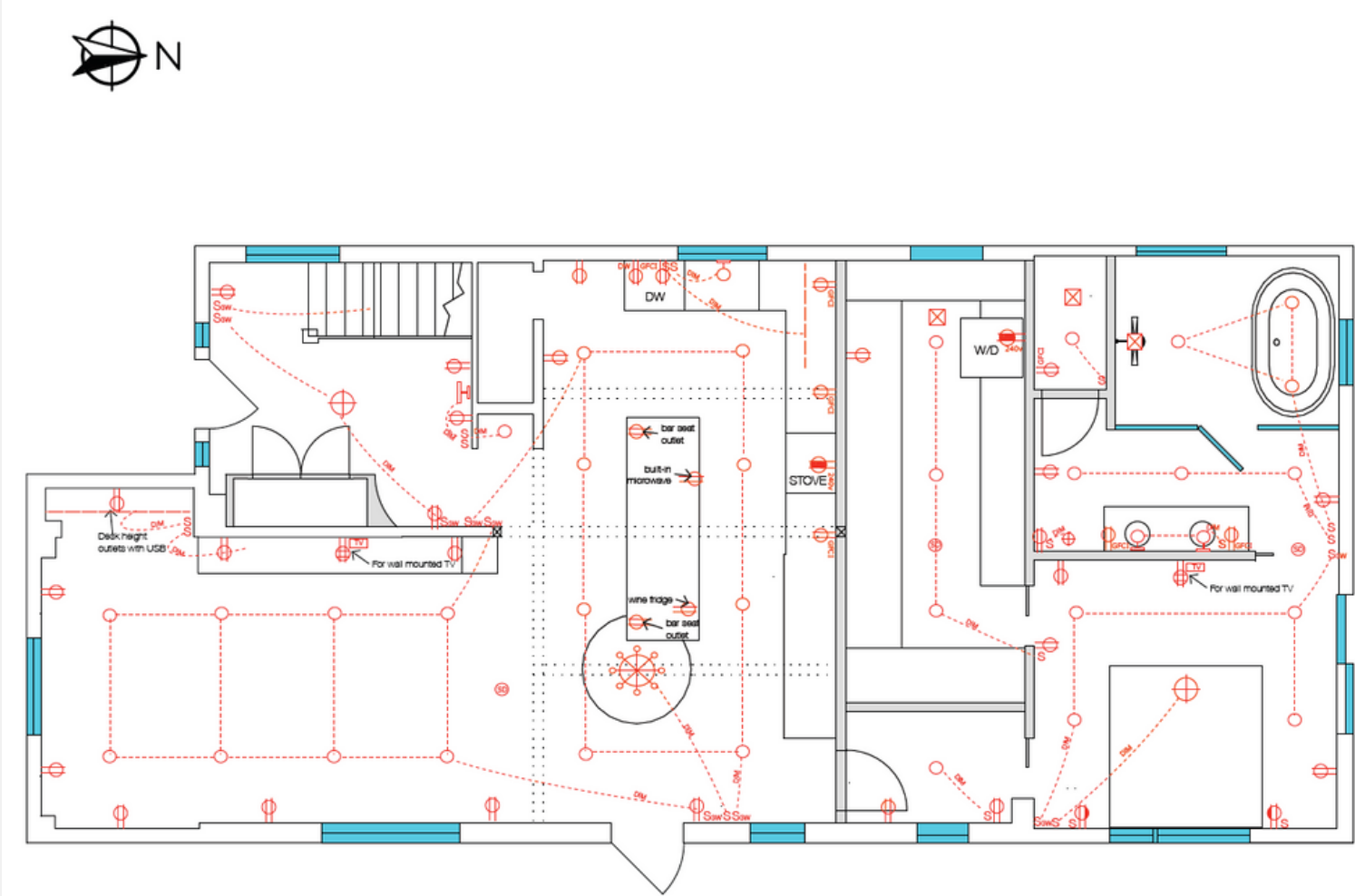
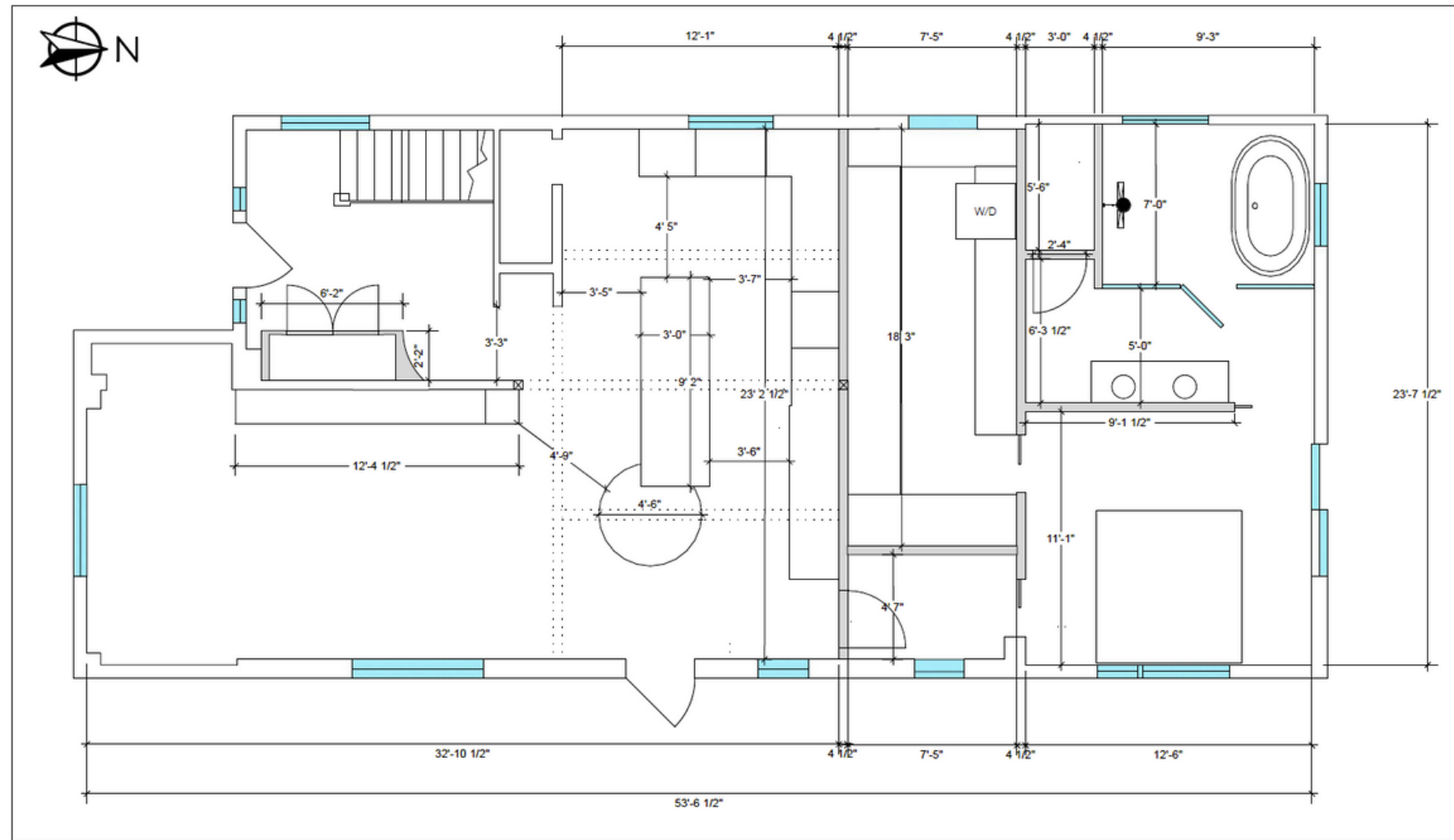
 403 • 465 • 1234

 Jocelynee@StyleFixation.com

 www.StyleFixation.com

 878 Hammer Ave, Kelowna, BC

*Style*•Fixation  
interiors



**KEY**

Lighting			
Electrical			
Wiring			

- NOTES**
- Kitchen pots: center between island, perimeter cabinets, and beams.
  - Place northernmost pots first (stove wall).
  - Appliances are marked
  - Chandelier or semi-flush to be mounted directly on beam and centered on dining table.
  - Bar seating outlets
  - Master bath has 72" vanity
  - Install angled/gimbal pots on sloped ceilings for direct light downward.
  - Bedside switches to control bedside lamps
  - LED strip lighting to be added to finished kitchen uppers and office (strip provided by Denca)
  - Pucks in entertainment unit also by Denca
  - Quad desk height outlet with USB
  - TV electrical in entertainment unit

**CLIENT**

**DATE**  
03.27.2023

**SCALE**  
NOT TO SCALE

**DRAWING**  
GROUND FLOOR

**Style•Fixation**  
interiors

878 Hammer Avenue  
Kelowna, BC

**CLIENT**

**SCALE**  
1:48 (1/4"=1')

**DATE**  
03.27.2023

**FLOOR PLAN**  
MAIN LEVEL

**NOTES**

- Drawings are for design purposes only.
- Final dimensions of finished spaces to be confirmed by carpenter.
- All interior door openings 30" unless stated
- Area: 1287 sq ft

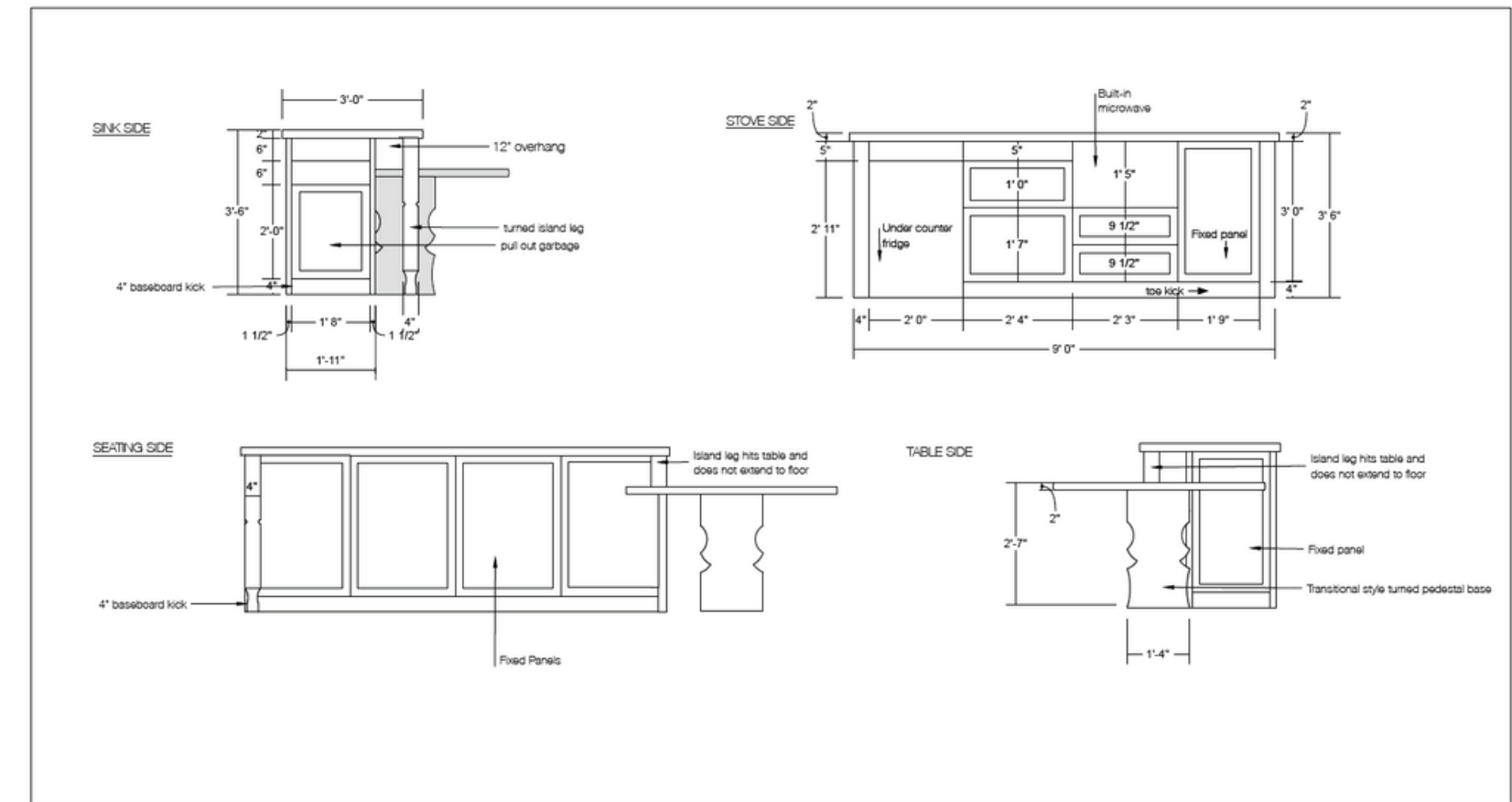
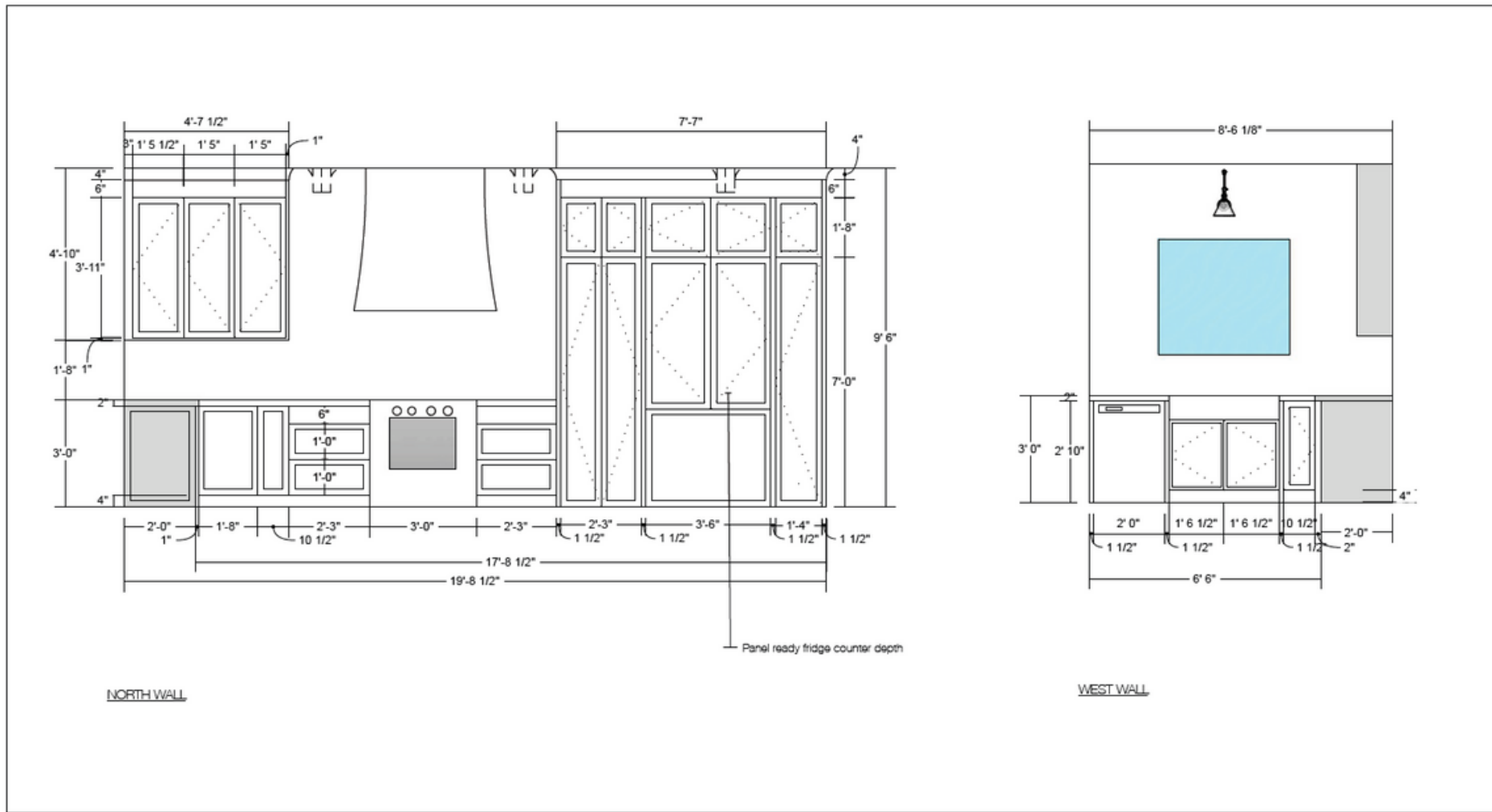
**Style•Fixation**  
interiors

878 Hammer Avenue  
Kelowna, BC

# INTERIOR DOCUMENTATION

- @StyleFixationInteriors
- 403 • 465 • 1234
- JocelyneeStyleFixation.com
- www.StyleFixation.com
- 878 Hammer Ave, Kelowna, BC

**Style•Fixation**  
interiors



**Style•Fixation**  
interiors

878 Hammer Avenue  
Kelowna, BC

**CLIENT**

**SCALE**  
1:32 (3/8"=1')

**DATE**  
03.27.2023

**KITCHEN  
ELEVATIONS**

**NOTES**

- Drawings are for design purposes only, final dimensions of finished spaces to be confirmed by carpenter.
- 1" counter overhang
- Note 8" beams in ceiling
- Panel ready counter-depth fridge (appliance specs TBC)
- Pantry to west of fridge
- Cabinet on far east side is cleaning cabinet for supplies
- Perimeter cabinetry to be painted Benjamin Moore Simply White

**Style•Fixation**  
interiors

878 Hammer Avenue  
Kelowna, BC

**CLIENT**

**SCALE**  
1:24 (1/2"=1')

**DATE**  
03.27.2023

**ISLAND  
ELEVATIONS**

**NOTES**

- Drawings are for design purposes only, final dimensions of finished spaces to be confirmed by carpenter.
- Island to be bar height 42"
- 1" counter overhang
- Built-in dining table detail (see Floor Plan - Main Level for reference)
- Decorative island leg on west side of island will extend to floor, on east side of island it will hit table top only and not extend down.
- Island to be painted Benjamin Moore Hale Navy, pedestal for dining table to be raw wood.

**INTERIOR DOCUMENTATION**

@StyleFixationInteriors

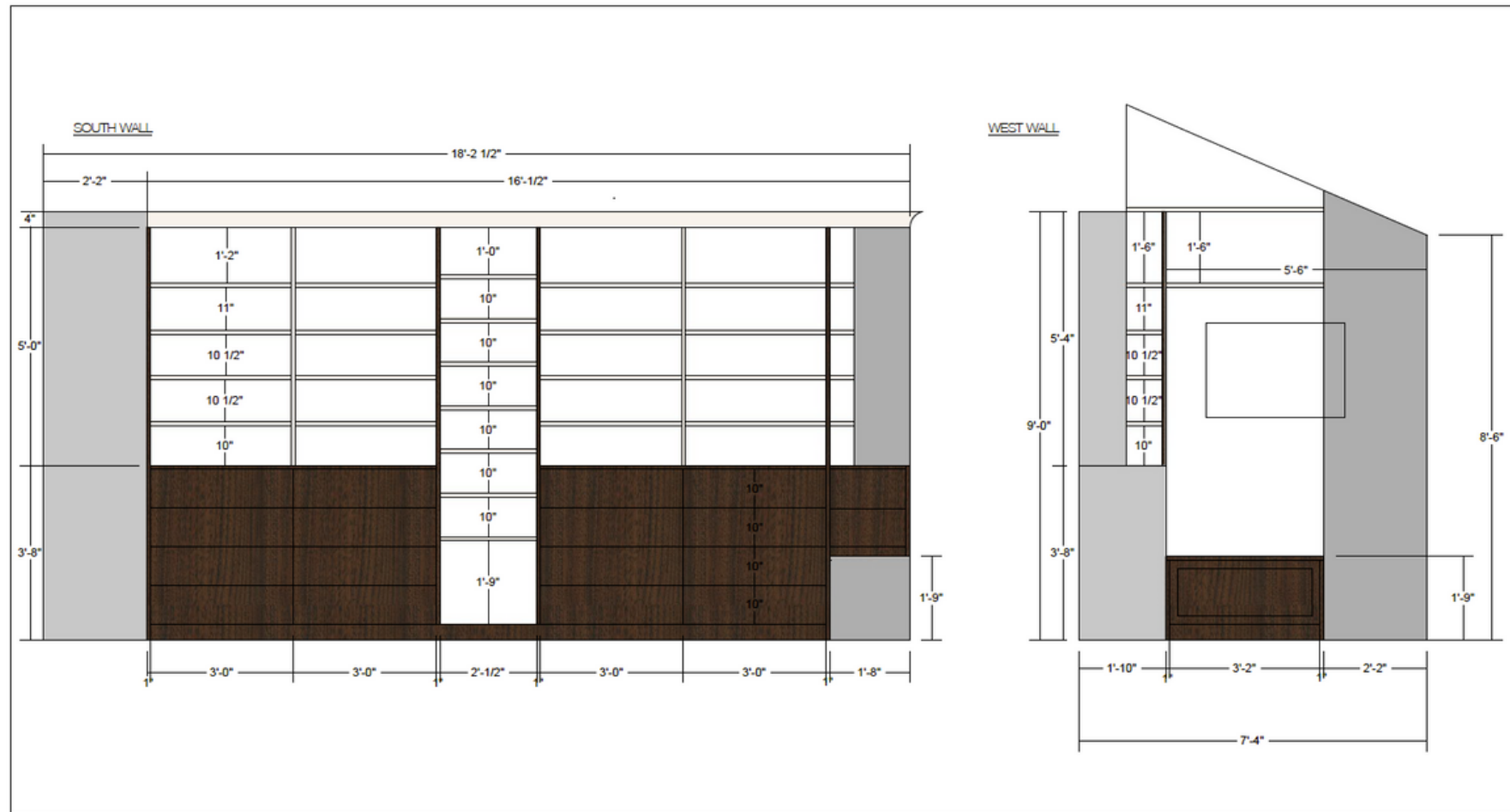
403 • 465 • 1234

JocelyneeStyleFixation.com

www.StyleFixation.com

878 Hammer Ave, Kelowna, BC

**Style•Fixation**  
interiors



**Style•Fixation**  
interiors

878 Hammer Avenue  
Kelowna, BC

**CLIENT**

**SCALE**  
1:24 (1/2"=1')  
**DATE**  
03.27.2023

MASTER  
CLOSET 1/2

**NOTES**

- Drawings are for design purposes only, final dimensions of finished spaces to be confirmed by carpenter.
- Room has sloped ceiling with peak at ~135°, cabinetry needs to work with unique shape
- 4" crown and baseboard
- 1" material throughout
- South wall: combination of built-in dressers, shoe storage and open shelving
- West wall: built in bench with drawer or top-hinge

**Style•Fixation**  
interiors

878 Hammer Avenue  
Kelowna, BC

**CLIENT**

**SCALE**  
1:24 (1/2"=1')  
**DATE**  
03.27.2023

MASTER  
CLOSET 2/2

**NOTES**

- Drawings are for design purposes only, final dimensions of finished spaces to be confirmed by carpenter.
- Room has sloped ceiling with peak at ~135°, cabinetry needs to work with unique shape
- 4" crown and baseboard
- 1" material throughout
- East wall: long hanging with shelving above
- North wall: closets with half hanging at approx 44" and 84"
- Tower washer/dryer with gables, pulout hamper and detergent storage built-in
- Closet will have a full length mirror behind a door

INTERIOR DOCUMENTATION

@StyleFixationInteriors

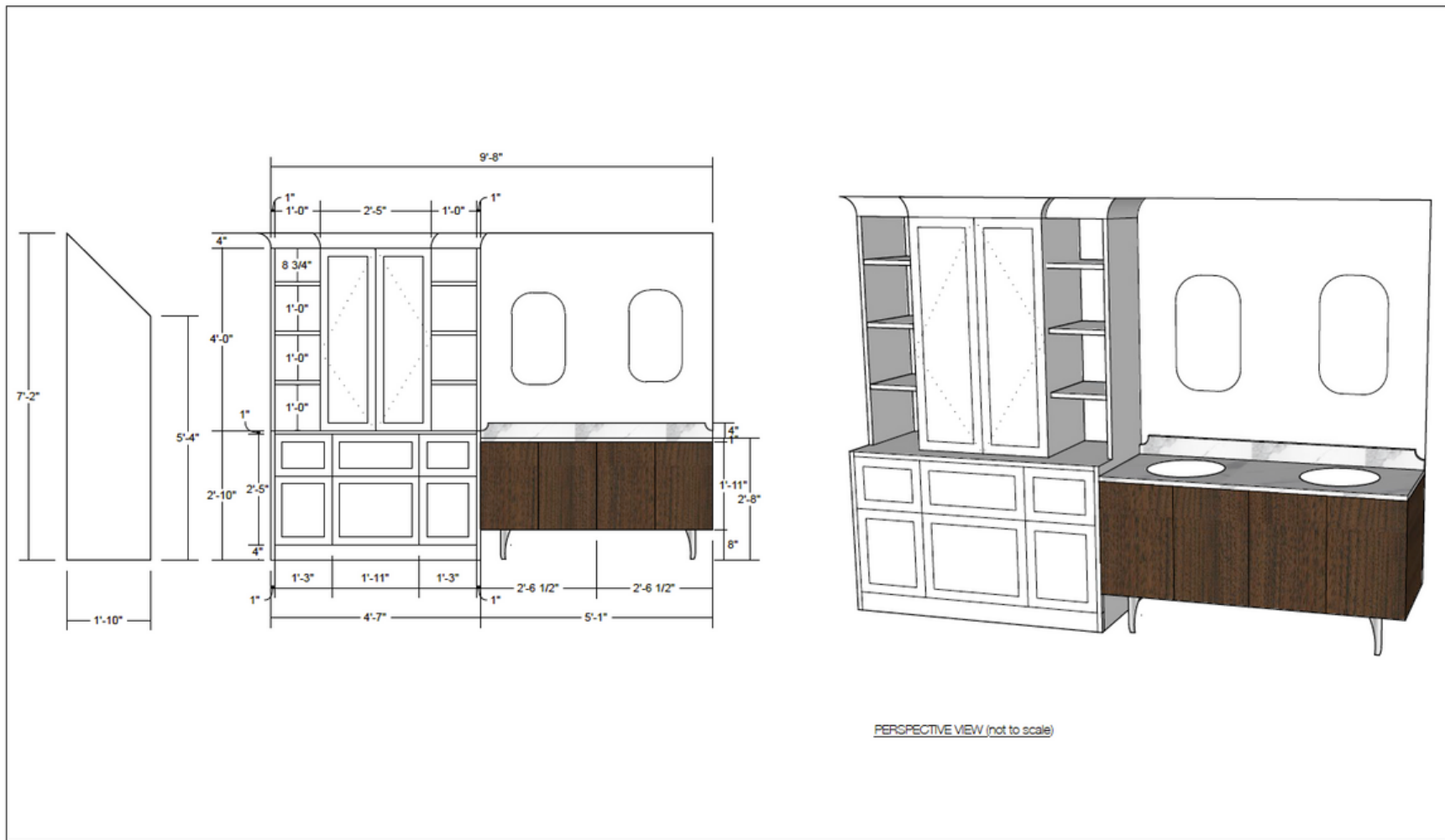
403 • 465 • 1234

JocelyneeStyleFixation.com

www.StyleFixation.com

878 Hammer Ave, Kelowna, BC

**Style•Fixation**  
interiors



PERSPECTIVE VIEW (not to scale)

Style•Fixation  
interiors

878 Hammer Avenue  
Kelowna, BC

CLIENT

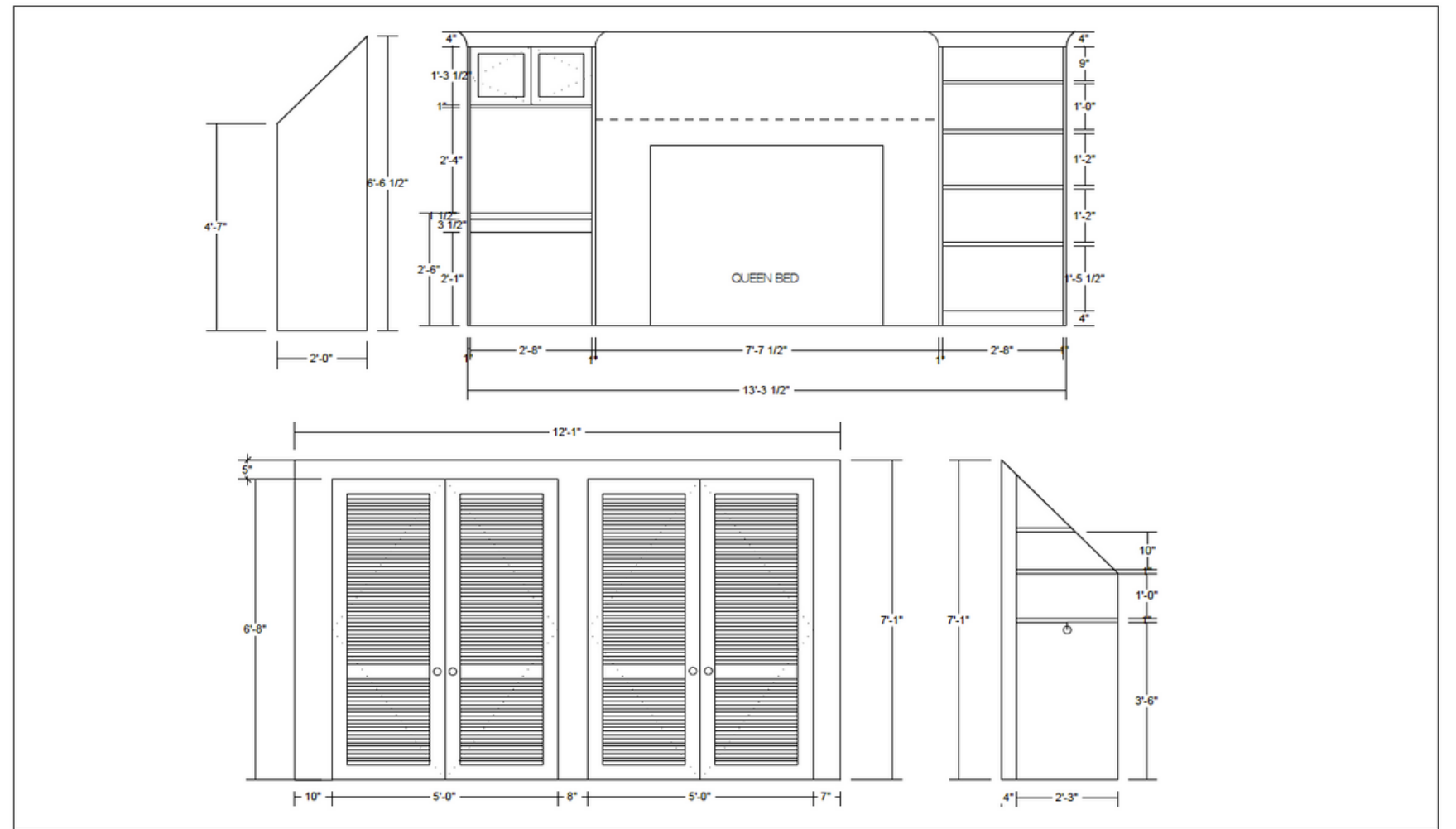
SCALE  
1:24 (1/2"=1')

DATE  
03.27.2023

SECOND LEVEL  
BATHROOM  
(VANITY WALL)

NOTES

- Drawings are for design purposes only.
- Final dimensions of finished spaces to be confirmed by carpenter.
- Room has uneven sloped ceilings



Style•Fixation  
interiors

878 Hammer Avenue  
Kelowna, BC

CLIENT

SCALE  
1:24 (1/2"=1')

DATE  
03.27.2023

NORTH BEDROOM  
SECOND LEVEL

NOTES

- Drawings are for design purposes only.
- Second level bedrooms have uneven slopes, final measurements to be confirmed by carpenter
- Bedrooms to have mirroring layouts: bed centered between bookshelf and desk
- Closet doors may not be louvered design (TBC)
- Closet will have a full length mirror behind a door

INTERIOR DOCUMENTATION

@StyleFixationInteriors

403 • 465 • 1234

JocelyneeStyleFixation.com

www.StyleFixation.com






878 Hammer Ave, Kelowna, BC

Style•Fixation  
interiors

AREA	COLOUR	NAME & CODE	FINISH
Exterior doors (excluding trim)		Benjamin Moore Onyx 2133-10	Satin
Internal doors (all areas)		Benjamin Moore White Dove OC-17	Satin
Baseboards & trim (all areas)		Benjamin Moore Simply White OC-117	Satin
Walls (all areas except washroom)		Benjamin Moore White Dove OC-17	Eggshell
Fireplace mantle		Benjamin Moore Onyx 2133-10	High gloss
Washroom		Benjamin Moore Shadow 2117-50	Eggshell
Ceiling		Benjamin Moore Waterborne Ceiling Paint 508	Ultra Flat


## PAINT

Style•Fixation  
interiors

AREA	LIGHTING TYPE	NAME & CODE	DETAILS	SUPPLIER	QUANTITY	IMAGE
Washroom	Wall Light	CWT Lighting Falocino Contemporary 3-Light Sconce	Chrome Finish	Rona Canada	2	
Fireplace	Wall Lights	Design Living Bethel International Contemporary Wall Sconce	Gold Finish	Rona Canada	2	
Dining	Picture Light	Design Living Bethel International Contemporary Wall Sconce	20 Watts 16.25-in Aged Brass	Rona Canada	1	
Kitchen Pantry Stairs Front closet	LED Strip	ilume 36-inch Ultra-Slim LED Linear, Light Strip Kit	3 x 12-inch pack	Home Depot Canada	6	
Exterior	Wall Lights	Artika C7 Indoor/Outdoor Wall Sconce	Brushed black	Rona Canada	5	





## LIGHTING

Style•Fixation  
interiors

ITEM	NAME & CODE	DETAILS	SUPPLIER	IMAGE
Pulls	Mercury Contemporary Handle	Golden Champagne	Marathon Hardware	
Knobs	Mesa Knob	Golden Champagne	Marathon Hardware	
Sink	Kindred Granite Series Undermount Double Bowl Granite Kitchen Sink	Onyx 35-in	Home Depot Canada	
Faucet	Orala Single-hole Kitchen Faucet with pull-down	Matte Black	Signature Hardware	






## KITCHEN SCHEDULE

Style•Fixation  
interiors

ITEM	NAME & CODE	DETAILS	SUPPLIER	IMAGE
Toilet	Glacier Bay All-in-One 4.8 LPF High Efficiency Elongated 2-Piece Toilet	White	Home Depot Canada	
Sink	Kingston Brass Square Sink Washstand	36 in. Console Table Camara with Metal Legs in Satin Brass	Home Depot Canada	
Faucet	Jacuzzi Duncan 2-Handle 6-in Widespread WaterSense Bathroom Sink Faucet with Drain	Matte Black	Rona Canada	
Mirror	Rosdorf Park Cable And Grey Contemporary Aluminum Oval Wall Mirror	Brass	Wayfair Canada	

## POWDER ROOM SCHEDULE

Style•Fixation  
interiors

ROOM	LIGHTING TYPE	NAME & CODE	DETAILS	SUPPLIER	QUANTITY	IMAGE
Throughout	Recessed Pot	Bazz Dimmable Recessed Light 11 W LED	Matte White Dimmable	Rona Canada	20	
Living Room	Ceiling	Slove Fringe Chandelier	Brass and teal	Studio V	1	
Dining Room	Ceiling	Bubble Chandelier	Natural Brass	Modern Komfort	1	
Kitchen	Ceiling	Canarm Lola Semi-Flush Mount	Gold	Rona Canada	1	
Office	Ceiling	Dainolite Trapezoid Modern/Contemporary Incandescent Flush Mount Light	Black/gold	Rona Canada	1	

## LIGHTING

Style•Fixation  
interiors


ITEM	NAME & CODE	DETAILS	SUPPLIER	IMAGE
Island Counter	Silestone E1 Marquina	Black and White	Granitework	
Perimeter Counter	Caesartone Blizzard	White with grey specks	Granitework	
Backsplash	Mono Serra Porcelain Tile	24x24 Polaris Brillio High Gloss	Rona Canada	
Lower Cabinets	Benjamin Moore Salamander Green 2050-10	Satin finish	Benjamin Moore	
Upper Cabinets	Benjamin Moore Chantilly Lace OC-65	Satin finish	Benjamin Moore	

## KITCHEN SCHEDULE

Style•Fixation  
interiors

# INTERIOR SCHEDULES

 @StyleFixationInteriors

 403 • 465 • 1234

 JocelyneeStyleFixation.com

 www.StyleFixation.com

 878 Hammer Ave, Kelowna, BC

Style•Fixation  
interiors



## LIVING ROOM

This is the first room you walk into upon entering the home, and it has to set the stage for the Contemporary Art Deco style. Rich colours, textures and patterns greet the eye as it moves through the space. The double-split complementary scheme can be found throughout, with curved lines and touches of geometric elements bringing the Art Deco theme to life.



1. Representation: Custom curtains on brass rod. Opera Easy Clean in Sage, Lexi & Lake. 2. Slone Fringe chandelier, Studio V. 3. White Dove OC-17, Benjamin Moore. 4. Beaulieu Canada Hilltop - Cavanal 1580, Okanagan Hardwood Floors. 5. Neft Sectional, District A Design. 6. Link Pillow, Annie Axtell. 7. Representation: Custom throw cushions, Carr in First Nations 016, Woeller Canada. 8. Rubber Tree, Home Depot. 9. Antique Contemporary Minimal Round Coffee Center Table in Travertine. 10. Sway Area Rug, CB2. 11. Representation: antique bench recovered in Monserrate in Delft, Lexi & Lake. 12. Boulevard Sideboard, Bernhardt. 13. Alaynia 3 Piece Glass Table Vase Set, Wayfair.

## OFFICE

This office is right off the front door so it is important it fits into the design as well as any other space. Custom blue-green curtains in luxe velvet create a backdrop for layered textures and shapes that really represent the contemporary Art Deco style. The boucle desk chair, reeded wood desk, geometric table lamp and patterned rug all echo the same geometric shapes and lines. A bold art piece ties in the purple tones from neighbouring spaces and infuses the room with energy.



1. Representation: Custom curtains on brass rod, velvet Appia in Juniper, Lexi and Lake. 2. Dainolite Trapezoid Contemporary Incandescent Flush Mount, Rona. 3. White Dove OC-17, Benjamin Moore. 4. Beaulieu Canada Hilltop - Cavanal 1580, Okanagan Hardwood Floors. 5. "Liquid Emotions" by Nikolaos Schizas, Singularart. 6. Asti Hand-tufted black and white area rug, CB2. 7. Aurellia Polished BRass Table Lamp, CB2. 8. Mia Chair, Rove Concepts. 9. Reid Oval Desk, CB2.

## SAMPLE BOARD

PROJECT: 5351 4a st  
CLIENT: Baker  
ROOM: Office  
DATE: October 17, 2022

Style•Fixation  
interiors



1. Quoizel Spiral Black Transitional Drum Pendant Light 2. Equilibre SINr 2, by Kardesch, from Singularart. 3. Topsoil, Benjamin Moore. 4. CLIENTS OWN Ikea Oxberg Bookcase with doors, white. 5. Mercury handle, Marathon Hardware. 6. Ruins Black Ceramic Sculptural Table Lamp with Pleated Shade by Athena Calderone, Crate and Barrel. 7. Torlys, Bowery Oak laminate flooring. 8. CLIENTS OWN vintage persian rug. 9. Warren Platner chairs, navy and gold, Knoll. 10. Office chair, CB2 11. CLIENTS OWN desk. 12. Velvet Dark Green Curtain Panel, 48"x96", CB2. 13. CLIENTS OWN shelves to be painted in

SAMPLE BOARDS

@StyleFixationInteriors

403 • 465 • 1234

JocelyneeStyleFixation.com

www.StyleFixation.com

878 Hammer Ave, Kelowna, BC

Style•Fixation  
interiors

## POWDER ROOM

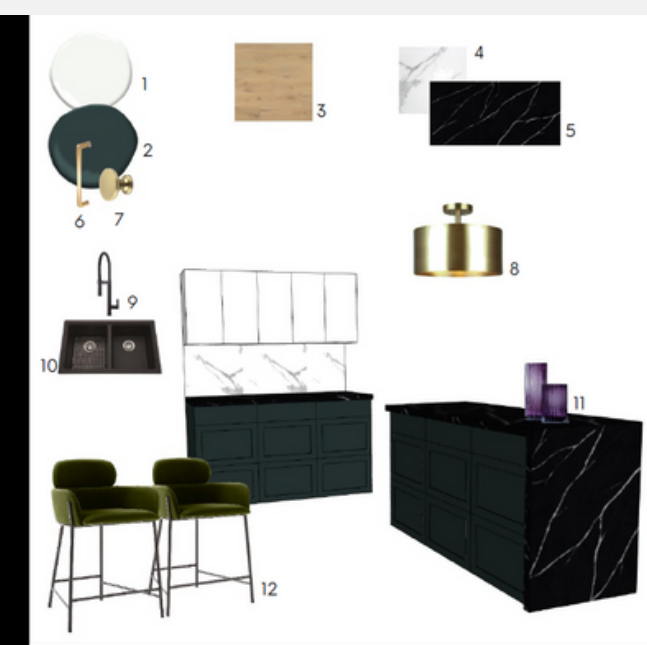
In this small space it was important to go even more bold with elements that repeat elsewhere in the design. Benjamin Moore's Shadow paint is used on all walls and the ceiling for an immersive experience. A bold gold mirror is framed with a geometric pair of sconces in mismatched metal tones for added interest and richness. Clean lines and rich materials are used for the faucet and antique-style sink. The abstract art piece will be reframed in walnut to tie into the colour scheme of the rest of the design, with the show-stopper being this gorgeous geometric marble floor tile.



1. Cole And Grey Contemporary Aluminum Oval Wall Mirror, Wayfair.
2. CWI Lighting Pallocino Contemporary 3-Light Sconce, Home depot
3. Jacuzzi Duncan Matte Black WaterSense Bathroom Sink Faucet.
4. Kingston Brass Washstand in Carrara, Home Depot.
5. "Under Cover" by Maria Moretti, Singulart.
6. Shadow 2117-30, Benjamin Moore.
7. Glacier Bay High Efficiency Elongated Toilet.
8. Ivy Hill Prisma Dark Green Polished Marble Floor tile, Home Depot.

## KITCHEN

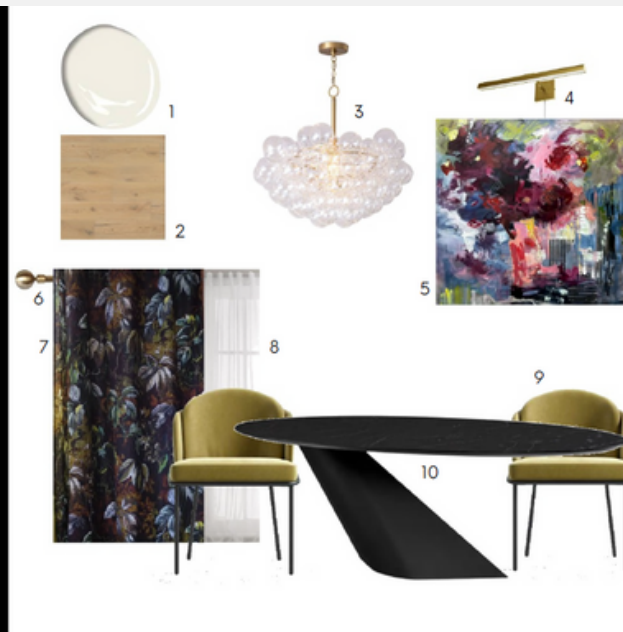
A mixture of contemporary and classic styles bring this kitchen design to life. Slab upper cabinets in Chantilly Lace white keep things bright and modern, and shaker lower cabinets in Salamander green create drama. The focal point is the outstanding Et Marquina half-waterfall design on the sink wall that will really show off the unique stone movement and be seen from the dining room. Large format marble-look backsplash add lots of movement and interest, but are still clean and bright. Adding some bold knobs and pulls adds luxe touch that ties into neighbouring spaces. Curved lines are echoed in the knobs, light fixture, stools and vases.



1. Chantilly Lace OC-65, Benjamin Moore.
2. Salamander Green 2050-10, Benjamin Moore.
3. Beaulieu Canada Hilltop - Cavanal 1580, Okanagan Hardwood Floors.
4. Mono Serra Porcelain Tile 24x24 Polaris Brillo, Rona.
5. Et Marquina, Silestone.
6. Mercury Contemporary Handle, Marathon Hardware.
7. Mesa Knob, Marathon Hardware.
8. Canarm Lola Flush Mount Gold, Rona.
9. Ocala Kitchen Faucet, Signature Hardware.
10. Kindred Double Granite Sink Onyx, Home Depot.
11. Purple Reeded Vases, Etsy.
12. Azalea Counter Stool, CB2.

## DINING

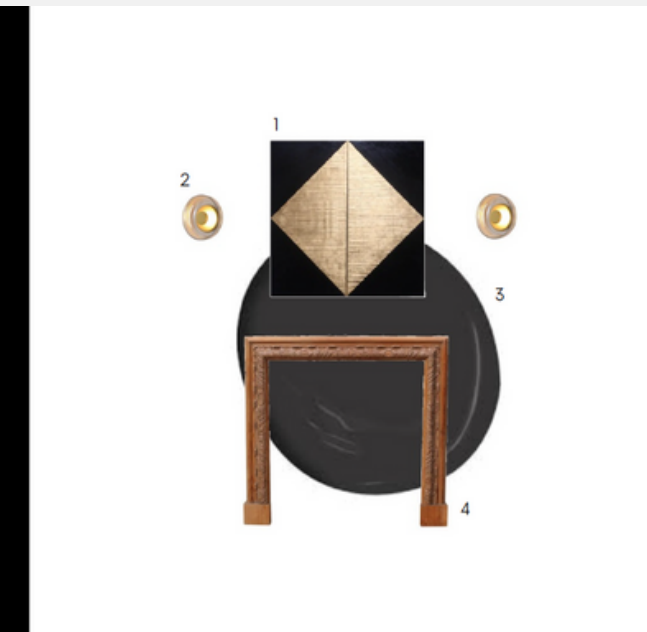
One of the most important spaces where family and friends come together over a meal, I wanted this dining room to feel bold and energetic. The double-split complementary scheme adds lots of colour and interest but feels balanced and comfortable to the eye. Geometric shapes and curves in the chandelier, chairs and table bring the luxury of Art Deco to this space.



1. White Dove OC-17, Benjamin Moore.
2. Beaulieu Canada Hilltop - Cavanal 1580, Okanagan Hardwood Floors.
3. Bubbles Chandelier, Modern Komfort.
4. Dainolite Leonardo Picture Light, Rona.
5. "Drama Queen Big Sister" by Marie Manon Corbell, Singulart.
6. Brass Extendable Curtain Rod, Temple and Webster.
7. Representation: Custom curtains in Jangal Moss by Designers Guild, Lexi & Lake.
8. Sheer grommet top curtain white, Freedom.
9. Custom Angelo Dining Chair, Rove Concepts, Influence velvet in Bramble.
10. Oblo Black 78" Wide Oval Dining Table, by Nuevo.

## FIREPLACE

The fireplace sits in the center of the large, open living and dining spaces. Bringing in an antique, one-of-a-kind mantel in a red-tone wood and layering over a rich black paint creates the perfect backdrop for a beautiful geometric art piece. Framing the art in geometric gold sconces further enhances the Contemporary Art Deco design in this home.



1. "Retour à l'essentiel", by Bridgette Dravet, from Singulart.
2. Design Living Bethel International Contemporary Wall Sconce, Rona.
3. Onyx 2133-10, Benjamin Moore.
4. Antique Bolection Oak Fire Surround, 1st Dibs.

SAMPLE BOARDS

@StyleFixationInteriors

403 • 465 • 1234

JocelyneeStyleFixation.com

www.StyleFixation.com

878 Hammer Ave, Kelowna, BC

Style•Fixation  
interiors